



SLC17A2 Polyclonal Antibody

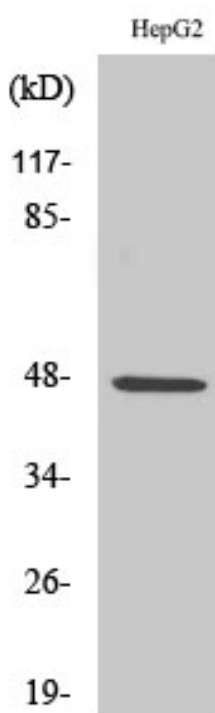
Catalog No	YP-Ab-00727
Isotype	IgG
Reactivity	Human;Mouse
Applications	WB;ELISA;IHC
Gene Name	SLC17A2
Protein Name	Sodium-dependent phosphate transport protein 3
Immunogen	The antiserum was produced against synthesized peptide derived from human SLC17A2. AA range:213-262
Specificity	SLC17A2 Polyclonal Antibody detects endogenous levels of SLC17A2 protein.
Formulation	Liquid in PBS containing 50% glycerol, 0.5% BSA and 0.02% sodium azide.
Source	Polyclonal, Rabbit,IgG
Purification	The antibody was affinity-purified from rabbit antiserum by affinity-chromatography using epitope-specific immunogen.
Dilution	WB 1:500-2000;IHC-p 1:50-300; ELISA 2000-20000
Concentration	1 mg/ml
Purity	≥90%
Storage Stability	-20°C/1 year
Synonyms	SLC17A2; NPT3; Sodium-dependent phosphate transport protein 3; Na(+)/PI cotransporter 3; Sodium/phosphate cotransporter 3; Solute carrier family 17 member 2
Observed Band	47kD
Cell Pathway	Membrane; Multi-pass membrane protein.
Tissue Specificity	Expressed in the small intestine, kidney, spleen and testis. Not detected in fetal brain, bone marrow, and mammary gland.
Function	function:May be involved in actively transporting phosphate into cells via Na(+) cotransport.,similarity:Belongs to the major facilitator superfamily. Sodium/anion cotransporter family.,tissue specificity:Expressed in the small intestine, kidney, spleen and testis. Not detected in fetal brain, bone marrow, and mammary gland.,
Background	function:May be involved in actively transporting phosphate into cells via Na(+) cotransport.,similarity:Belongs to the major facilitator superfamily. Sodium/anion cotransporter family.,tissue specificity:Expressed in the small intestine, kidney, spleen and testis. Not detected in fetal brain, bone marrow, and mammary gland.,
matters needing attention	Avoid repeated freezing and thawing!



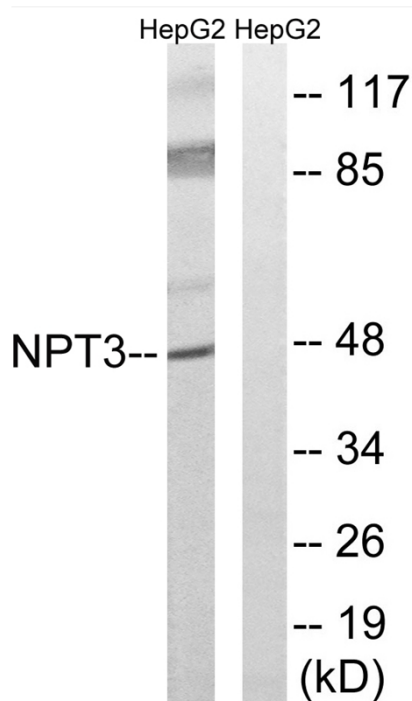
Usage suggestions

This product can be used in immunological reaction related experiments. For more information, please consult technical personnel.

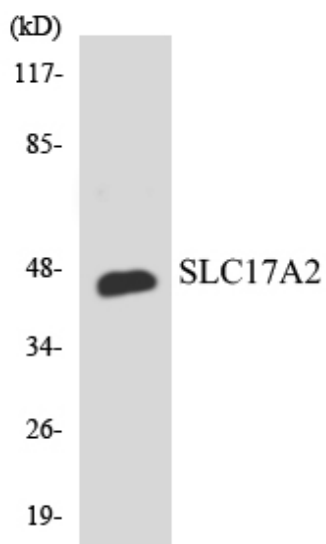
Products Images



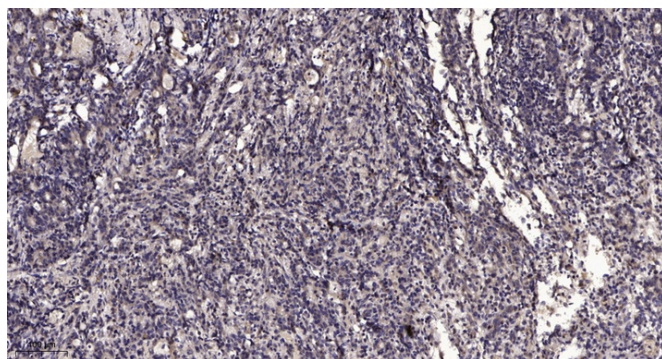
Western Blot analysis of various cells using SLC17A2 Polyclonal Antibody



Western blot analysis of lysates from HepG2 cells, using SLC17A2 Antibody. The lane on the right is blocked with the synthesized peptide.



Western blot analysis of the lysates from RAW264.7 cells using SLC17A2 antibody.



Immunohistochemical analysis of paraffin-embedded human Gastric adenocarcinoma. 1, Antibody was diluted at 1:200(4° overnight). 2, Tris-EDTA,pH9.0 was used for antigen retrieval. 3,Secondary antibody was diluted at 1:200(room temperature, 45min).